

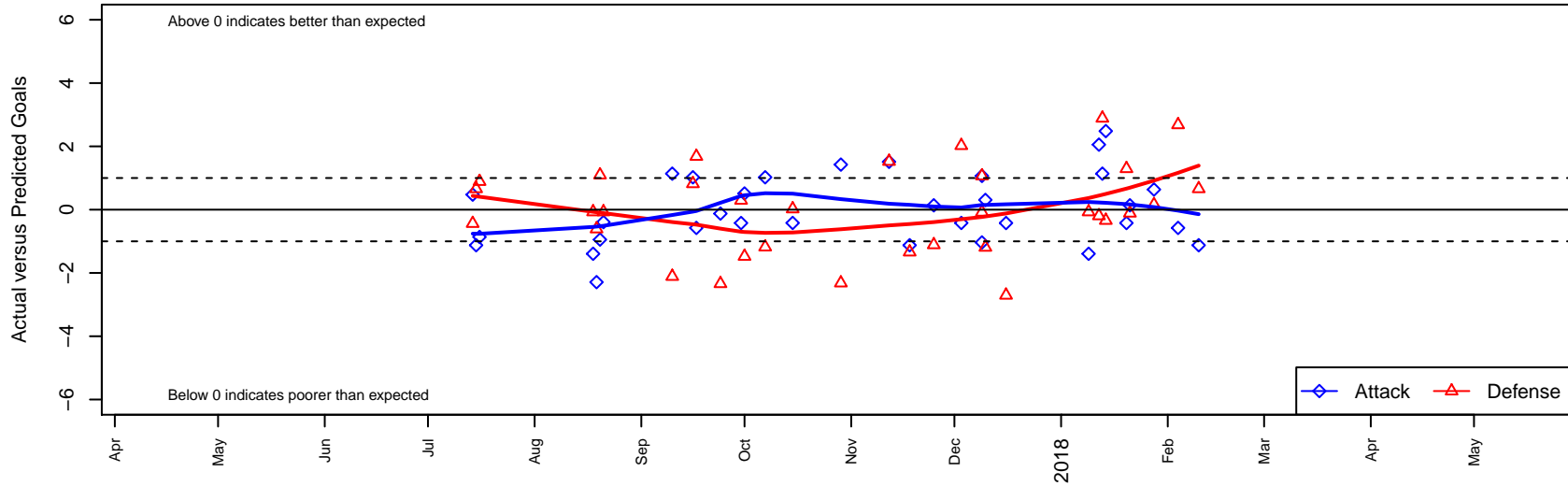
GS Surf A B01

GS Surf
 Bothel, WA
 B01 total strength=1769
 attack=36.18 defense=22.89
 fall league = RCL B01 Div 1

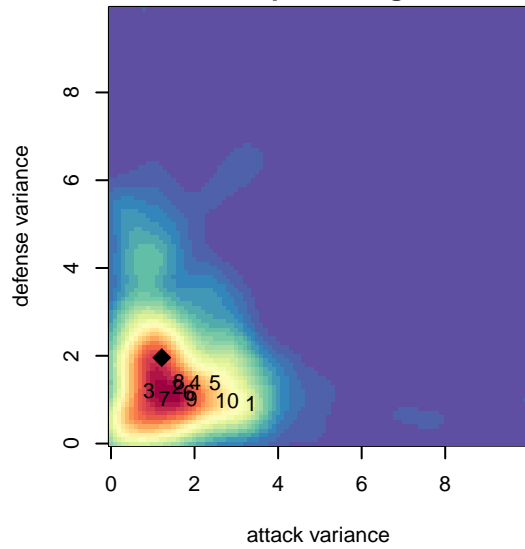
alt names used:
 GREATER SEATTLE SURF SC GS SURF B01
 GREATER SEATTLE SURF SC GS SURF B01
 GS Surf B01 A
 GREATER SEATTLE SURF SC GS SURF B01
 GS Surf B01 A
 GS Surf B01 A Nuon (WA)
 GS Surf B01 A

Venues played:
 2017 Nike Crossfire Challenge Super Group U'
 2017 Bigfoot Gold U17
 2017 RCL B01 Div 1
 2017 Timbers Winter Showcase 2001 FWRL U
 2017 RCL B01 7V2
 2017 FWRL NW B01
 2017 WYS Championship B01

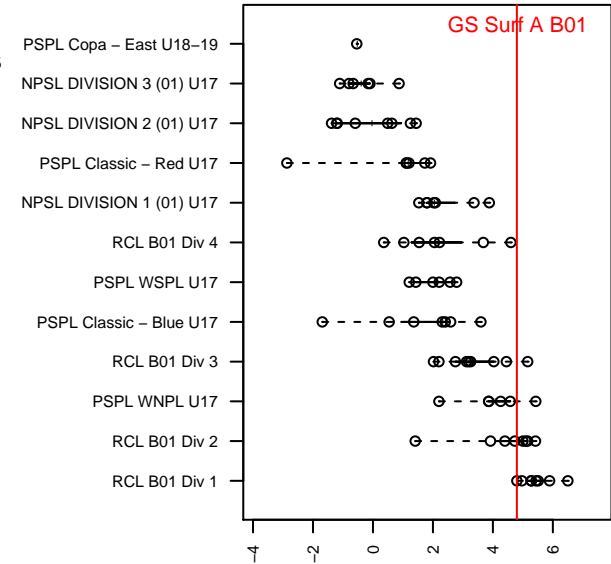
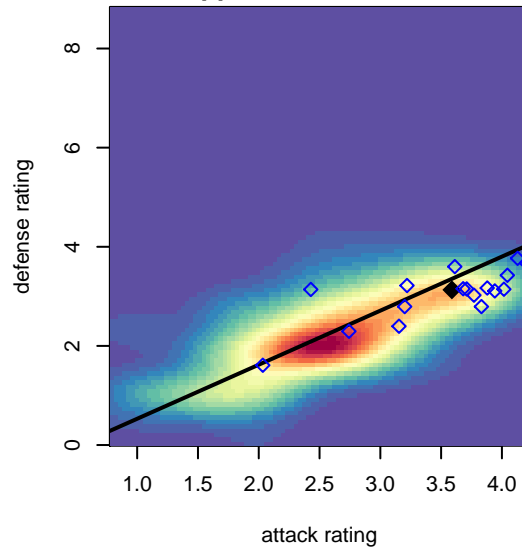
GS Surf A B01
 Dots are actual minus expected GF (blue circles) and GA (red triangles).
 Blue line is smoothed change in attack strength. Red is smoothed change in defense strength.



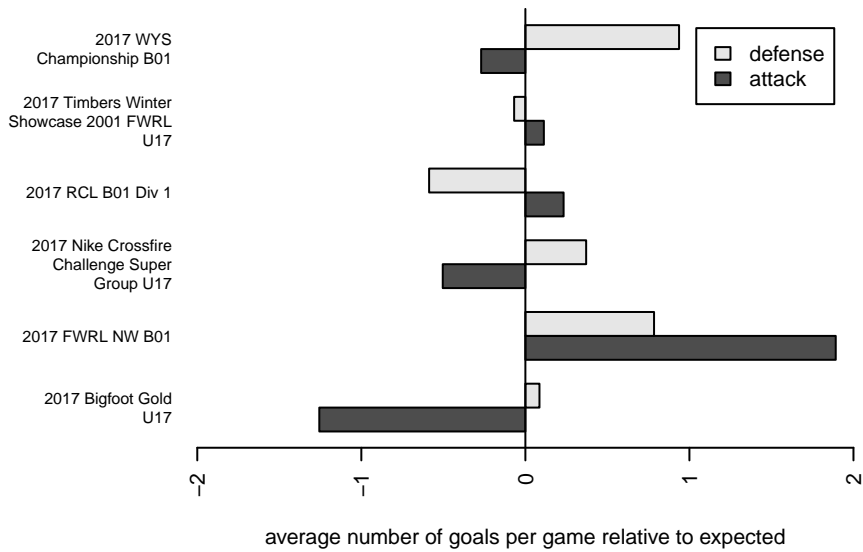
**attack and defense variance (black dot)
relative to other teams
and top 10 in region**



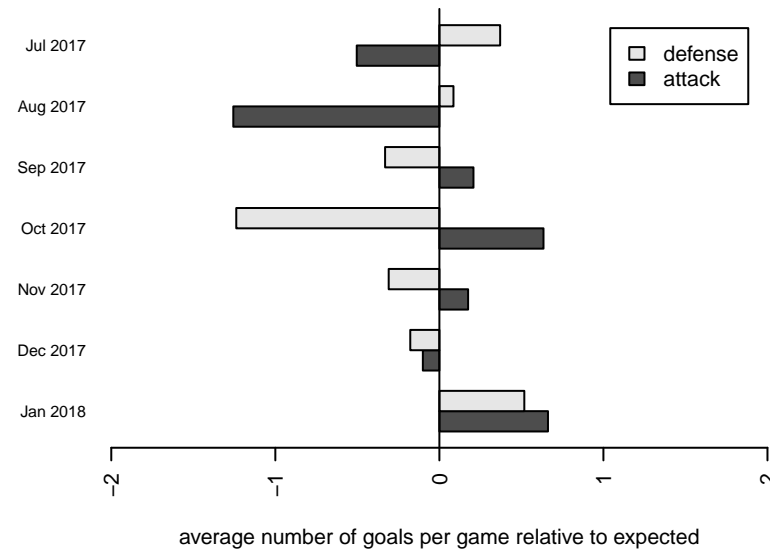
**attack and defense rating
relative to others at age
and all opponents in last 13 months**



Performance relative to 13 month average



Performance relative to 13 month average



date	home		away		venue	pred.home	pred.away
2018-02-10	GS Surf A B01	0	WA Rush B01	2	2017 WYS Championship B01	1.12	2.66
2018-02-04	PacNW Maroon B01	0	GS Surf A B01	1	2017 WYS Championship B01	2.68	1.58
2018-01-28	GS Surf A B01	2	Whatcom Rangers Gold B01	1	2017 WYS Championship B01	1.36	1.16
2018-01-21	WPFC Black B01	3	GS Surf A B01	1	2017 WYS Championship B01	2.89	0.86
2018-01-20	Spokane Sounders A B01	1	GS Surf A B01	1	2017 WYS Championship B01	2.30	1.42
2018-01-14	GS Surf A B01	6	Sting SC Timbers Red B01	1	2017 FWRL NW B01	3.52	0.66
2018-01-13	WPFC Black B01	0	GS Surf A B01	2	2017 FWRL NW B01	2.89	0.86
2018-01-12	Westside Timbers Copa Red B01	3	GS Surf A B01	3	2017 FWRL NW B01	2.80	0.95
2018-01-09	GS Surf A B01	0	Snohomish United Black B01	2	2017 RCL B01 7V2	1.39	1.93
2017-12-16	Spokane Sounders A B01	5	GS Surf A B01	1	2017 RCL B01 Div 1	2.30	1.42
2017-12-10	GS Surf A B01	2	Eastside Timbers Red B01	3	2017 Timbers Winter Showcase 2001 FWRL U	1.69	1.81
2017-12-09	Alaska YS ADP B01	0	GS Surf A B01	1	2017 Timbers Winter Showcase 2001 FWRL U	1.07	2.04
2017-12-09	GS Surf A B01	3	ETFC Valencia Black B01	2	2017 Timbers Winter Showcase 2001 FWRL U	1.93	1.92
2017-12-03	GS Surf A B01	1	Crossfire Premier A B01	0	2017 RCL B01 Div 1	1.42	2.02
2017-11-25	WPFC Black B01	4	GS Surf A B01	1	2017 RCL B01 Div 1	2.89	0.86
2017-11-18	GS Surf A B01	0	WA Rush B01	4	2017 RCL B01 Div 1	1.12	2.66
2017-11-12	GS Surf A B01	3	Seattle United Copa B01	1	2017 RCL B01 Div 1	1.49	2.52
2017-10-29	GS Surf A B01	3	PacNW Maroon B01	5	2017 RCL B01 Div 1	1.58	2.68
2017-10-15	Crossfire Premier A B01	2	GS Surf A B01	1	2017 RCL B01 Div 1	2.02	1.42
2017-10-07	Eastside FC Red B01	3	GS Surf A B01	2	2017 RCL B01 Div 1	1.82	0.98
2017-10-01	Seattle United Copa B01	4	GS Surf A B01	2	2017 RCL B01 Div 1	2.52	1.49
2017-09-30	GS Surf A B01	1	Spokane Sounders A B01	2	2017 RCL B01 Div 1	1.42	2.30
2017-09-24	WA Rush B01	5	GS Surf A B01	1	2017 RCL B01 Div 1	2.66	1.12
2017-09-17	PacNW Maroon B01	1	GS Surf A B01	1	2017 RCL B01 Div 1	2.68	1.58
2017-09-16	GS Surf A B01	2	Eastside FC Red B01	1	2017 RCL B01 Div 1	0.98	1.82
2017-09-10	GS Surf A B01	2	WPFC Black B01	5	2017 RCL B01 Div 1	0.86	2.89
2017-08-21	Snohomish United Black B01	2	GS Surf A B01	1	2017 Bigfoot Gold U17	1.93	1.39
2017-08-20	Kent United Green B01	0	GS Surf A B01	2	2017 Bigfoot Gold U17	1.09	2.95

date	home		away		venue	pred.home	pred.away
2017-08-19	GS Surf A B01	4	NW United Red B01	1	2017 Bigfoot Gold U17	6.29	0.39
2017-08-18	GS Surf A B01	0	Snohomish United Black B01	2	2017 Bigfoot Gold U17	1.39	1.93
2017-07-16	GS Surf A B01	0	WPFC Black B01	2	2017 Nike Crossfire Challenge Super Grou	0.86	2.89
2017-07-15	GS Surf A B01	0	WA Rush B01	2	2017 Nike Crossfire Challenge Super Grou	1.12	2.66
2017-07-14	CCB Elite B01	1	GS Surf A B01	2	2017 Nike Crossfire Challenge Super Grou	0.56	1.53